



**Tuesday,
September
11, 2012**

Identifying and Treating Autism Spectrum Disorders in Children

Volume 173, Issue 5

**SEPTEMBER
2012**



Speaker:
Jarrett Cupp, M.A., TLLP, M.A.
Counseling Psychology



Speaker:
Matt VanDerMuelen, M.A., TLLP, M.A.
Clinical Psychology

LOCATION:
**BRONSON
BATTLE CREEK**

AGENDA:

- * **5:30 P.M. - CCMS Executive Committee (OPC 2nd Fl. Board Room)**
- * **6:00 P.M. - 6:30 Social (OPC 2nd Fl. Conf. Rms. 1&2)**
- * **6:30 P.M. Dinner/Presentation (OPC 2nd Fl. Conf. Rms. 1&2)**

MENU:
Buffet with vegetarian option

1-Hr CME OBJECTIVES

- ◆ Identifying Spectrum Characteristics: Early and Late Identification
- ◆ Comprehensive Diagnostic Tools: Psychological Assessments
- ◆ Services for Success: ABA, Social Skills, OT, SLP and PT

ABOUT THE SPEAKERS

Jarrett Cupp, M.A., TLLP

Undergraduate-Central Michigan University (2008) B.S. Psychology

Graduate-Western Michigan University (2011) M.A. Counseling Psychology

Studied Counseling Psychology at Western Michigan University and graduated in 2011 with an emphasis in testing and diagnostic. Studied under Dr. Roger Apple, and supervised by Dr. Mary Z. Anderson, conducting tests and assessments of children at the Kalamazoo Regional Education Service Agency during a field practicum. Currently employed at the Envision Center in Battle Creek doing testing and diagnostics of children with developmental disabilities.

Matt VanDerMuelen, M.A., TLLP

Undergraduate-Michigan State University (2006) Psychology

Graduate-Illinois School of Professional Psychology (2009) M.A. Clinical Psychology

Studied Clinical Psychology at the Illinois School of Professional Psychology in Chicago and graduated in 2009. Conducted his therapy practicum at Advocate Illinois Masonic Medical Center working with teenage substance abuse and recovering addicts. Served as program specialist at Hartgrove Hospital in Chicago working with teenagers with behavioral and psychotic disorders. Served as senior clinician at Starr Commonwealth in Michigan, working with teenagers struggling with substance abuse. Currently employed at the Envision Center in Battle Creek doing testing and diagnostics of children with developmental disabilities.

TARGET AUDIENCE

The target audience for this program is ALL PHYSICIAN MEMBERS of Calhoun County Medical Society.

This is a non-sponsored presentation. The speakers have

**CCMS
PLANNING
CALENDAR**

2012

2nd Tuesday, 6:30pm Meeting Topics:

Oct 9 Winslow Lectureship @ BCCC, WMU School of Med.

Nov. 13 Headaches, Jones, BCC

2013

Jan. 19 President's Celebration @ BCCC

Feb. 12 TBA (Member suggestions welcome) @ BCC

Mar. 12 TBA (Member suggestions welcome) @ BCC

Apr. 9 TBA (Member suggestions welcome) @ BCC

no financial affiliation. A disclosure form is on file at Bronson Battle Creek.

R.S.V.P.: to Diane 660-0893 See you at Bronson Battle Creek Outpatient Center Second Floor Conference Rooms 1 & 2

PRESIDENT'S REPORT



**Lokesh R. Edara,
MD**

2012 President,
Calhoun County
Medical Society.
Email: edaralr@
bronsonhg.com.

If you have
COUNTY
suggestions,
call me at my
Battle Creek
office phone
(269) 968-3030

FEDERAL LEGISLATOR CONTACT INFO.:

U.S. Senator
Debbie Stabenow
-R

Phone
1-616-975-0052
Email: senator@stabenow.se
nate.gov

U.S. Representa-
tive 7th District
Tim Walberg-D

Phone
1-517-780-9075
Email: [http://
walberg.house.
gov](http://walberg.house.gov)

Please join me in congratulating **Kari Formsma, MD** as she is the recipient of the **2012 CCMS/MSMS Community Service Award!** See pages 8 and 9 of this issue to see her multiple contributions over the years. AND, please also congratulate her on celebrating her **40th wedding anniversary** with her husband, **Larry Hembroff!**

Allergy Conference Summary

On August 15, 2012, an Asthma Allergy Conference, the first of its kind, was held at the Bronson Gilmore Health Auditorium. It was an overwhelming success. There were more than 100 physicians, mid-level practitioners, residents, and nurses from the west Michigan area.

Dr. Giri Dandamudi started conference with introduction in immunology and allergy, **Dr. Richard Weber**, from National Jewish Health, presented on Allergic Rhinitis and Asthma. **Dr. Alan Baptist**, from the University of Michigan, provided education on Chronic Cough and Chronic Urticaria. **Dr. Elena Lewis**, from Asthma Allergy Centers of Southwest Michigan, concluded the presentations with a discussion on Food Allergies and Anaphylaxis. The day provided an excellent up-to-date educational opportunity for our local health care providers.

September Health Recognitions

I find it interesting to review this website for what is considered a hot topic during the month or what the criteria was to choose them, but obviously there are not enough months, not to mention days, in a year to recognize all health issues. For our consideration though, please review the list below and be especially sensitive this month to patients regarding these topics:

- ◆ Childhood Cancer Awareness Month, Cure-Search for Children's Cancer
- ◆ Leukemia & Lymphoma Awareness Month, Leukemia & Lymphoma Soc.
- ◆ National Childhood Obesity Awareness Month, American College of Sports Medicine
- ◆ Fruit and Veggies—More Matters Month, Produce for Better Health Fndtn., Centers for Disease Control and Prevention
- ◆ Whole Grains Month
- ◆ Healthy Aging® Month, Educational Television Network, Inc.
- ◆ National Atrial Fibrillation Awareness Month, American Foundation for Women's Health
- ◆ National Cholesterol Education Month, National Heart, Lung, and Blood Institute Health Information Center
- ◆ National Recovery Month, Substance Abuse and Mental Health Services Admin.
- ◆ National Sickle Cell Month, Sickle Cell Dis-

ease Association of America, Inc.

- ◆ Newborn Screening Awareness Month, Save Babies Through Screening Foundation, Inc.
 - ◆ Ovarian Cancer Awareness Month, Natl. Ovarian Cancer Coalition
 - ◆ Prostate Cancer Awareness Month, ZERO - The Project to End Prostate Cancer
 - ◆ National ITP Awareness Month, Platelet Disorder Support Association
 - ◆ 9/13—National Celiac Disease Awareness Day, Celiac Sprue Assoc.
 - ◆ 9/21—World Alzheimer's Day, Alzheimer's Disease International
- ...to name a few. Retrieved 9/4/2012, from <http://www.healthfinder.gov/nho/nho.asp#m3>. Feel free to check into this collection with links to the organizations sponsoring research on these topics for updated information toward cure or comfort from these issues. As we know, the research never ends!

CCMS SEEKING 2013 OFFICERS

- ◆ Secretary/Treasurer (one position)
- ◆ Three Trustees
- ◆ The annual election is at the November General Membership meeting
- ◆ Officers serve the calendar year and attend 7 executive committee 5:30 meetings

Best regards,
Lokesh R. Edara,
MD

In June 2012, the Supreme Court largely let stand the Affordable Care Act — **President Obama's** sweeping healthcare overhaul, in a mixed ruling that Court observers were rushing to analyze. The law, passed by Congress in March 2010, put in motion the creation of a nationwide insurance system that would sharply reduce the number of Americans without coverage, a goal that Democratic presidents had unsuccessfully pursued for 75 years.

The high court's 5 to 4 decision was a striking victory for the president and Congressional Democrats, with a majority, including the conservative chief justice, **John G. Roberts Jr.**, affirming the central legislative pillar of Mr. Obama's term.

The court case had centered on the so-called individual mandate, a requirement that **all Americans obtain health insurance or pay a fine**. Republicans challenged it as an unconstitutional expansion of federal power. The Obama administration argued that it was needed to fix basic flaws in the insurance market and that it was crucial to provisions like the requirement that insurers accept all comers without regard to pre-existing health conditions.

The court's decision did significantly restrict one major portion of the law: the expansion of Medicaid, the government health-insurance program for low-income and sick people. The ruling gives states some flexibility not to expand their Medicaid programs, without paying the same financial penalties that

the law called for.

With access to medical insurance being extended to tens of millions of people, the question becomes: **Who will provide their care? The Association of American Medical Colleges estimates that in 2015 the country will have 62,900 fewer doctors than needed. And that number will more than double by 2025, as the expansion of insurance coverage and the aging of baby boomers drive up demand for care. Even without the health care law, the shortfall of doctors in 2025 would still exceed 100,000.**

Health experts, including many who support the law, say there is little that the government or the medical profession will be able to do to close the gap by 2014, when the law begins extending coverage to about 30 million Americans. It typically takes a decade to train a doctor.

Also, across the country, fewer than half of primary care clinicians were accepting new Medicaid patients as of 2008, making it hard for the poor to find care even when they are eligible for Medicaid. The expansion of Medicaid accounts for more than one-third of the overall growth in coverage in President Obama's health care law.

Another major factor increasing demand — along with expansion of coverage in the law and simple population growth — is the aging of the baby boom generation. Medicare officials predict that enrollment will surge to 73.2 million in 2025, up 44

percent from 50.7 million in 2012.

The pool of doctors has not kept pace, and will not, health experts said. Medical school enrollment is increasing, but not as fast as the population. The number of training positions for medical school graduates is lagging. Younger doctors are on average working fewer hours than their predecessors. And about a third of the country's doctors are 55 or older, and nearing retirement.

Physician compensation is also an issue. The proportion of medical students choosing to enter primary care has declined in the past 15 years, as average earnings for primary care doctors and specialists, like orthopedic surgeons and radiologists, have diverged. A study by the Medical Group Management Association found that in 2010, primary care doctors made about \$200,000 a year. Specialists often made twice as much.

The Obama administration has sought to ease the shortage. The health care law increases Medicaid's primary care payment rates in 2013 and 2014. It also includes money to train new primary care doctors, reward them for working in underserved communities and strengthen community health centers.

The provisions within the law are expected to increase the number of primary care doctors by perhaps 3,000 in the coming decade. Communities around the country need about 45,000!

Best regards,

*Marjaneh Rouhani,
MD*

LEGISLATIVE REPORT



Marjaneh Rouhani MD
CCMS Legislative Co-Chair
Email: mrouhani@doctor.com
Concerns?
Office phone (269) 969-6108

STATE LEGISLATOR CONTACT INFO.:

Michigan 62nd District State Representative
Kate Segal-D
Phone toll free 1-888-347-8062
Email: KateSegal@house.mi.gov

Michigan 63rd District State Representative
Jase Bolger-D
Phone toll free 1-877-265-4371
Email: JamesBolger@house.mi.gov

Michigan 19th District Senator
Mike Nofs-R
Phone 269-441-1222
Email: ILikeMike@MikeNofs.com

MSMS THIRD DISTRICT REPORT



**Michigan State
Medical Society**
120 W Saginaw
East Lansing, MI
48823

Main Phone:
(517) 337-1351

Website:
www.msms.org

Email:
msms@msms.org

**Calhoun's MSMS
Member
Consultant,
Gary A. Huyge,**
will be pleased to
meet with you to
answer your MSMS
membership
questions.
To schedule
a visit, please
contact him at
Phone
616-826-4652
or
Email
GHuyge@msms.org.

Calendar

Sept. 12 — Troy
*Conference on Child
Obesity*

Sept. 21-22 — Ann Arbor
Conference on Bioethics

The annual MSMS Conference on Bioethics will explore the growing threats to the physician-patient relationship subsequent to ongoing economic, political, regulatory and technological transformations in health care. Hear speakers address issues such as physician retention, Generations X, Y and Z, physicians as stewards, and legal implications.

Oct. 23 — Troy
*Advanced Practice
Strategies for the Patient
Centered Medical Home*

Oct. 24-27 — Troy
*147th Annual Scientific
Meeting*

Register online at
www.msms.org, or Phone
MSMS registrar at: 517-
336-57581

Practice Partners

**MSMS Helps Members
Save Time and Money
when Choosing Vendors**



Choosing a vendor for computer systems, office supplies, collections or financial consulting can be a time-consuming and expensive task. To help physician members navi-

gate the possibilities (and save money in the process), MSMS is proud to offer its Practice Partner program. This valuable member benefit offers considerable discounts on everything from insurance and credit card processing to car rentals and magazine subscriptions.

The Michigan Doctors' Political Action Committee (MDPAC) aims to bring grassroots involvement through organized medicine in Michigan to a whole new level.

Michigan Families Remain Top Priority for State Physicians

LANSING—President of the Michigan State Medical Society, **John G. Bizon, MD**, issued the following statement following the United States Supreme Court's ruling on the federal health care reform legislation:

"Patients always have been the top priority for Michigan physicians and that has not changed with this ruling. The Michigan State Medical Society will continue to be a constructive partner with Congress and our patients to ensure that the health care reforms protect Michigan seniors, children and families and empower physicians to focus on providing the absolute best care for their patients. While the reforms are aimed at expanding coverage and access to care, we believe Congress

has more work to do regarding health care in the U.S.

"The creation of an Independent Payment Advisory Board, an unelected and unaccountable body, and the failure of Congress year after year to securely fund the Medicare program could result in decreasing access to care for seniors and all patients. The need for a continuing, open dialogue with Congress remains as health care reforms are implemented. We will work to ensure that patients' access to care is the top priority in every discussion and debate."

'Lean' on MSMS for Education about Practice Innovations

MSMS partnered with Lean Transformations Group to offer a physician learning collaborative that will help practices streamline processes and reduce hassles of practice management through innovation. "Lean Physician Practice Innovation: Finding the Time to Deliver Great Health Care," a series of webinars and conferences, kicks off with a FREE webinar on Sept. 27.

EHR Stage 2 Rules Released

The Office of the National Coordinator for Health IT

Continued on page 5

CCMS REPORT

MEMBERSHIP UPDATE

As of 8/31/12, we have a total of 212 members.

Help us Congratulate...

Sivareddy Tegulapalle, MD, Internal Medicine, received his **“Fifty-Year” Pin** for graduating from medical school in 1962!

New Retiree

Ralph A. Cram, MD, Family Practice, Keefer Medicine

Membership Applications

2nd Reading—

Philip Creps, DO, Psychiatry, Bronson Battle Creek

1st Reading—

William A. Gray, MD, Ophthalmology,

Southwest Michigan Eye Center

EMAILED MEETING FLYERS / NEWSLETTERS ARE FASTER!!! Send an email to Diane at calhouncms@yahoo.com.

PLEASE ADD CCMS TO YOUR ADDRESS LISTS for your important practice announcements and changes.

MEMBERSHIP DUES INFO.

The CCMS executive committee voted by email in June 2012 to NOT raise the 2013 dues.

Dues invoices for the next calendar year begin being mailed in September of the previous year.

County dues are 100% tax deductible/State dues are 85% tax deductible. Multiple payment options include the easy **GROUP BILL** to the practice.

Please encourage the recruitment of peers—this is a membership-based organization.

- ◆ \$275 County Society for regular members
- ◆ \$137.50 Spouse if other spouse is paying full dues
- ◆ \$137.50 Part-time less than 20hrs/wk
- ◆ MSMS dues are \$495. AMA dues (Optional) will be \$420.
- ◆ \$50 Retiree county invoices will be mailed in January. Retirees state dues are free.

MSMS THIRD DISTRICT REPORT

Continued from page 4

(ONC) and the Centers for Medicare & Medicaid Services (CMS) recently released final requirements for Stage 2 Electronic Health Records Incentive programs. Find fact sheets about CMS's final rule, as well as ONC's standards and certification criteria, and more.

MSMS Committees: Calhoun County Medical Society 2012-2013 Committee Members

The following Calhoun County Medical Society Members have volunteered their time to serve on the following committees and task forces at the state level:

- ◆ Committee on Aging

Robert W. Oakes, MD - retired

- ◆ Committee on CME Accreditation
Alfred Hamady, MD - retired
- ◆ MSMS Information Technology Committee
Sridhar Chalasani, MD, Seshagiri R. Dandamudi, MD, Mark A. Walker, MD
- ◆ Mental Health Liaison Committee
Marjaneh Rouhani, MD
- ◆ Committee Medical Licensure & Discipline
Raakesh C. Bhan, MD
- ◆ Committee on State Legislation & Regulations
John G. Bizon, MD, Russell B. Rothrock, MD - retired
- ◆ Liaison Committee With Third Party Payers
Kenneth A. Lombardi, MD
- ◆ Task Force on a Patient Focused Compensation System
Russell B. Rothrock, MD - retired

Other committees without Calhoun representation include:

- ◆ Planning Committee for MSMS Annual Scientific Meeting
 - ◆ Committee on Bioethics
 - ◆ Committee on CME Programming
 - ◆ Committee on Health-care, Quality, Efficiency, and Economics
 - ◆ Committee on Maternal and Perinatal Health
 - ◆ Committee on Membership Recruitment and Retention
 - ◆ Liaison Committee with Michigan's Public HealthTask Force on Physician Extenders
- On behalf of all Calhoun County Medical Society members, we thank you for your service. If you are interested in serving on an MSMS committee or need more information, please contact Heather Hill at 517-336-5772 or hhill@msms.org.

2012 CCMS EXECUTIVE COMMITTEE

at the
5:30
meetings...

President - Lokesh R. Edara,
MD

President-elect- Gunjana
Bhandari, MD

Vice President - William J.
Comai, DO

Secretary / Treasurer -
Satya B. Chaparala, MD

Immediate Past
President - Mahesh C.
Karamchandani, MD

3rd District Director /
Legislative Chair - John
G. Bizon, MD

Michigan Society of
Hematology &
Oncology - Stephen L.
Smiley, MD

Trustees (3-Year Terms)

Sridhar Chalasani, MD,
exp. 2012

Maddur Badarinath, MD,
exp. 2012

Zarius Drummond, MD,
exp. 2013

Karl Loomis, MD, exp. 2013

Christopher M. Flynn, MD,
exp. 2014

Patrick Sweeney, exp. 2014

MSMS Delegates (1-Year Term)

Raakesh C. Bhan, MD

B. Douglas Campbell, MD

James H. Timmons, MD, PhD

Paul A. Walk, MD

Alternate Delegates (1-Year Term)

Daniel C. Hood, MD

Jeff M. Jones, MD

Tarek Elshaarawy, MD

Rachel D. Yankama, MD

Elkmoss Corner: "Fourth-Year Rotations"

Everyone in our third-year medical school class had to rotate through the same core services. During the fourth year, however, other than some basic requirements of medicine and surgery, we could pretty much pick our electives. After starting out in neurosurgery, neurology, and family practice to see which specialty to choose, I then scheduled electives in areas that made me the most uncomfortable—cardiology (mainly because I wanted to know what to do if someone I was around had a cardiac arrest) and dermatology (which seemed completely illogical to me).

Dermatology was a lot of fun, particularly since it required no night call. Sharon, the very first patient I saw, however, reinforced why dermatology and I would never be on the same wavelength. This was a twenty-something girl with a tattoo on her upper arm that spelled STUIE in big letters. She had been dating a guy named Stuart since high school and thought he was the only one for her—forever. Unfortunately, her boyfriend had other interests including many women. After several years they broke up. It was a terrible experience for Sharon, but she

recovered and was dating another guy. He did not particularly like STUIE on his girl's arm, and Sharon wanted it removed.

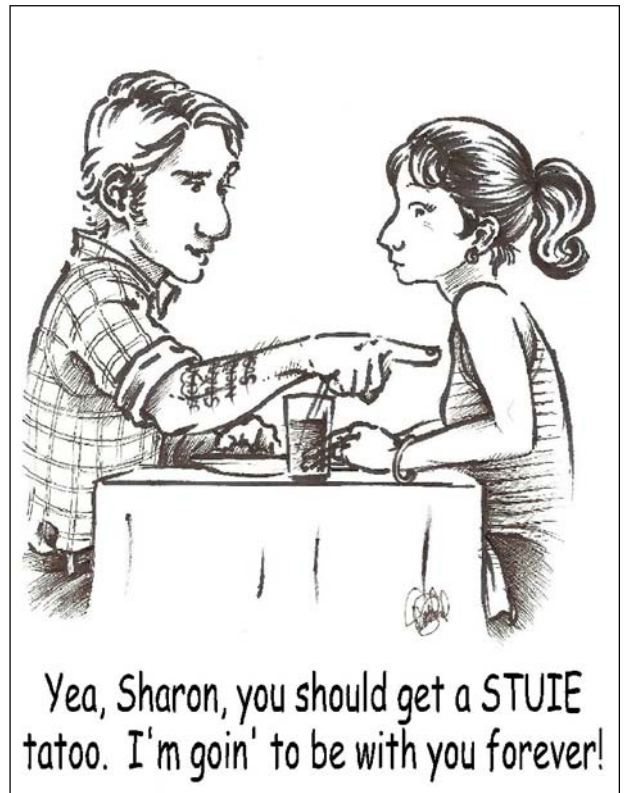
I had no idea what to tell her, so I corralled the attending. He explained to Sharon that the tattoo was too deep to abrade and too large to cut out. She would require a full-thickness graft from her abdomen to completely remove it—not a pretty or easy procedure.

Sharon was dead set on getting rid of STUIE and finally settled on removing just a small strip of skin that could be sutured shut. Parts of STUIE would still remain, but it would be unreadable. That seemed to satisfy her.

Cardiology was much more rigorous with call every third night in the Cardiac Care Unit, but much more educational. My attending, Dr. Ridgley, was a particularly knowledgeable physician, but also quite demanding and opinionated. With

my military background, I could usually deal with such a personality, but he finally got to me towards the end of the rotation.

Dr. Ridgley came back from his office one afternoon and told me he had just admitted Mr. Stonebreaker from his office and he wanted me to "work him up." I accompanied my attending to a plush private room where both Mr. and Mrs. Stonebreaker had just arrived. The patient was a big bear of a man in his sixties. His wife was quite petite but rather pushy, not only answering every question put to her husband, but even ordering Dr. Ridgley around. I thought that was unusual considering



Elkmoss *(continued)*

the arrogance and prominence of the cardiologist, but I kept my mouth shut like any good fourth-year medical student should.

Dr. Ridgley explained that Mr. Stonebreaker had been feeling out of sorts the last couple of days and was admitted to undergo some tests. In listening to Mrs. Stonebreaker's answers to the questions Ridgley put to her husband, I could not even remotely suspect any cardiac problems. Ridgley then turned to me and told me to do the admission workup and listed a whole bunch of tests for me to order.

When Ridgley was finished and going out the door, Mrs. Stonebreaker said, "One more thing, Doctor. I think he drinks too much."

Without hesitation, Ridgley says to me, "And do a BSP test, too," and then left the room.

A BSP test was a liver function study whereby a somewhat caustic compound is injected into the patient's vein. Later, blood was analyzed to see how effective the liver was in metabolizing the compound. If any of the medicine leaked out of the vein, it could severely damage the skin. For that reason, a doctor (or student doctor in this case) had to administer

the BSP instead of a lab tech.

I did not see why this patient was even in the hospital, let alone needing a dangerous test like Dr. Ridgley had flippantly instructed me to do, so I ran him down in the hall and asked.

"Do you know who Mr. Stonebreaker is?" Ridgley replied.

"No sir, I do not," I replied in my most formal military manner.

"Mr. Stonebreaker is the founder of the large, nationwide chain of Stony Restaurants, you idiot. Now get back in there and take good care of him. Anything he or his wife wants, you make sure he gets it. Do you understand?"

Even in Vietnam with mortars being fired all around me, I was never more nervous than when I injected Mr. Stonebreaker with a hazardous chemical to run what I felt was an unnecessary test. Thankfully, the test went smoothly and Mr. Stonebreaker's test was negative, but I was an emotionally scarred student and grateful to move off the service. Dermatology started to look better to me.



*Herman J.
Elkmoss,
M.D.*

Timothy M. Wendt, CFP®
Associate

PLANTE & MORAN FINANCIAL ADVISORS

INVESTMENT AND FINANCIAL CONSULTANTS

Plante & Moran Financial Advisors

An affiliate of 750 Trade Centre Way, Suite 300, Portage, Michigan 49002

plante
moran

Tel: 269.567.4621

Fax: 248.233.8741

Timothy.Wendt@plantemoran.com

MARK YOUR CALENDAR

**Winslow Lectureship
Tuesday, October 9th
6-7:00pm Dinner
7-8:00pm Presentation
Battle Creek Country
Club**

SPEAKER:

Dr. Hal Jensen, Founding Dean of the Western Michigan University School of Medicine.
<http://www.wmich.edu/medicine/directory/jensen.html>

Presentation answers to the following questions include:

- ◆ a WMU Medical School update
- ◆ impact residents will have in our hospitals
- ◆ how patient care may / may not change
- ◆ how physicians, medical practices and community members can help

If there are other questions, please forward them to **Nancy Lassen's** attention,
Ph: 259-965-5572, or
lassen4@aol.com.

DONATIONS ACCEPTED

For your **useful equipment and medication disposal**, please consider donations to **Community HealthCare Connections (formerly Nursing Clinic of Battle Creek)**.

Samantha Pearl,

Executive Director
Community HealthCare Connections
(Calhoun Health Plan & Nursing Clinic of Battle Creek)
190 East Michigan Ave,
Ste 385
Battle Creek, MI 49014
(269) 969-6461
spearl@chcconnections.org.



**Kari R. Formsma,
MD**

**2012 Michigan
State Medical
Society /
Calhoun County
Medical Society
Community
Service Award
Recipient**

Dr. Formsma Receives 2012 Community Service Award

Every year, Michigan State Medical Society (MSMS) collaborates with each county medical society to recognize one physician for his or her community service efforts—whether local, statewide, or global.

This year, MSMS and the Calhoun County Medical Society (CCMS) Executive Committee unanimously chose **Kari Formsma, MD** for the 2012 Michigan State Medical Society and Calhoun County Medical Society Community Service Award for her long list of community involvement. This award will be presented at the Battle Creek Country Club at the annual Health Care Leadership Forum / Sherwood Winslow, MD Distinguished Lectureship to be held on Tuesday, October 9th, 2012.

Dr. Formsma's most notable contributions include:

- ◆ Dr. Formsma is the Organizer and Chair of Surplus Health Supplies for Missions which mobilizes local community members to collect, salvage, and make available otherwise discarded useable health supplies for those in need and abroad out of Battle Creek, Michigan.
- ◆ Dr. Formsma is the Co-leader of Crown Financial Ministry classes.
- ◆ Dr. Formsma volunteers and teaches for the

Zimba Mission Hospital, Zambia, Africa during mission trips.

- ◆ Dr. Formsma was Group Leader, teen Sunday school, and Volunteer, medical mission trip to Yoloxichitl, Mexico, through First Wesleyan Church.

- ◆ Dr. Formsma was Advisor, Health Advocates to the United Way in Battle Creek.

- ◆ Dr. Formsma was Co-organizer, "Saline Solution," a course for physicians on integration of faith into practice.

- ◆ Dr. Formsma was a Physician Volunteer at the Nursing Clinic, a free clinic for homeless/noninsured patients in Battle Creek, and a Medical Student Volunteer at Migrant Health Clinic in Mason, Michigan.

- ◆ Dr. Formsma served positions as Chair on the Maternal/Infant Health Commission, Member on the Teen Pregnancy Prevention Partnership, and Member on the Fetal Infant Mortality Review Committee in Calhoun County, Michigan.

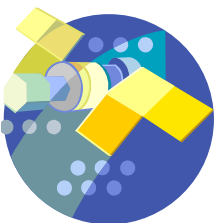
- ◆ Dr. Formsma was a Board Member of the Women's Resource Center, and served as a Childbirth Educator in Radford, Virginia, and Chair of the Family Planning Community Advisory Board for the

New River Valley Health Department over a five-county area in Virginia

- ◆ Dr. Formsma served as a Birth Control Counselor for the Women's Health and Information Project, and as a Nurse's Aide for the Student Health Service at Central Michigan University in Mount Pleasant, Michigan.

Dr. Formsma has made several group presentations, holds multiple memberships in professional organizations, and has done research on Controlled Ovarian Hyperstimulation and an Ethnographic Comparison of Public Schoolchildren.

Dr. Formsma served her Residency in Obstetrics and Gynecology at Saginaw Cooperative Hospital, received her M.D. at the College of Human Medicine at Michigan State University, her B.S.N. from Radford University in Virginia, and her B.S. from Central University. She is currently an Obstetrician/Gynecologist at the Family Health Center of Battle Creek. Formerly, she was in private practice at Pathway Women's Health, and in group practice with Battle Creek Obstetrics and Gynecology Associates. She also worked in Carson City as a temporary employed physician for Women's Healthcare. Previous to these, she worked as a Nursing Supervisor, Perinatal Nurse,



Dr. Formsma *(continued)*

and Labor and Delivery Nurse.

Dr. Formsma's mission experiences have taught her that volunteerism is stimulating, intellectual challenging, and life-changing. Getting involved exposes providers to different systems helping one see things differently—it's service based, clinical skills are sharpened, and diagnostic and treatment skills are directly applicable and amplified. On missions, you don't have everything at your fingertips; i.e., with the drug shortages in Africa, you adapt, you can function, and do good. Even though mission work is the way medicine used to be and other systems don't get hung up on the little things (codes, electronic medical records, and liability insurance), one develops a tremendous appreciation for the great system the U.S. has with ancillary support. For instance, things that may seem unimportant such as a shower before surgery makes one realize why we do what we do. The tremendous cultural experience helps one grow as a person, and when providers see what others have to deal with, the experience actually reduces stress because it keeps things in perspective. Those receiving treatment value every healthcare provider and every provider develops a direct relationship with patients.

Dr. Formsma's passion, Surplus Health Supplies for Missions (SHSM), is a non-profit group she formed and continues to lead (see ad this page) that has donated tens of thousands of dollars' worth of supplies on a shoestring budget. In October they contributed to a shipping container with almost \$1,000,000 worth of supplies sent to the Philippines!. Habitat for Humanity donates storage space.

Criteria for the award include:

1. The nomination made through the President or Executive of the local county society;
2. Must have current membership with MSMS/CCMS;
3. Only one awardee per year per society;
4. Must be nominated for above and beyond service of daily professional activities; and
5. Consideration on the basis of involvement, initiative, and the need fulfilled by their service.

Doctor Formsma:

Your peers, patients, and recipients of your volunteerism Thank You for your past, present, and continuous service to the global community!!!

SURPLUS

HEALTH SUPPLIES FOR MISSIONS

FREE HEALTH-RELATED SUPPLIES FOR PATIENTS IN NEED

- For Patients in Need Locally, or
- For Medical Mission Trips in the U.S. or Abroad

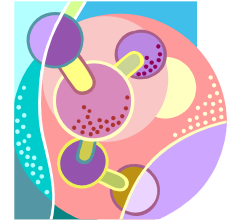
PURPOSE: "...to rescue, salvage, and collect surplus medical supplies and equipment that would otherwise be discarded and make them available to those in need, including locally to people of the community or elsewhere in the United States and for medical missions trips abroad."

TO DONATE SUPPLIES

Bring item(s) to the **Habitat for Humanity ReStore** at 551 W. Michigan Ave., Battle Creek, MI, during regular hours and tell the attendant they are being donated to SHSM. **(No medications, please.)**

TO RETRIEVE SUPPLIES

1. Go to surplushealthsupplies.org,
2. Look over the list of available items, then
3. Send an email to info@surplushealthsupplies.org to arrange a time to pick up the desired items.



TO JOIN

Volunteer by contacting us at info@surplushealthsupplies.org and we will get in touch with you. Tax deductible contributions sent to Habitat For Humanity, directed to SHSM.

CONTACT:

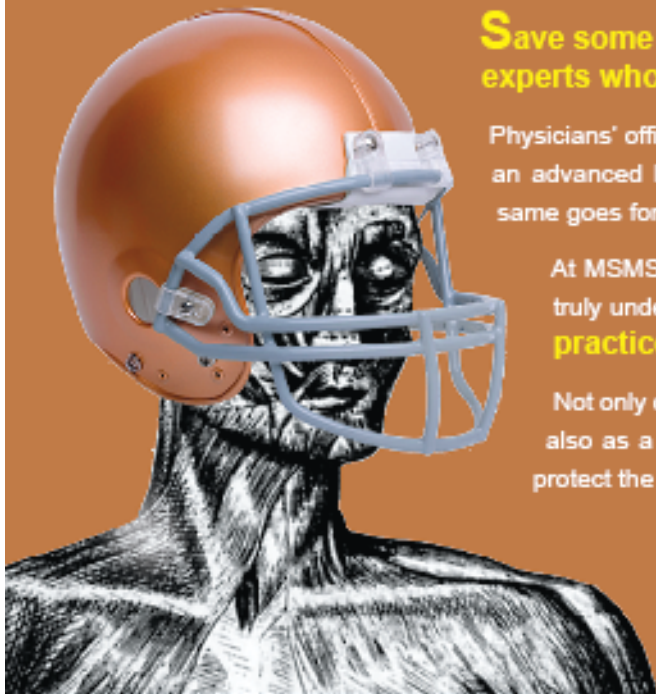
Dr. Kari Formsma @ 269-274-1379.

Thanks for thinking of us!

Figure 6

Anatomy of MSMS Physicians Insurance Agency

A CEREBRUM IS A TERRIBLE THING TO WASTE



Save some brain cells and choose the insurance experts who know your medical practice best.

Physicians' offices refer patients to specialists every day. Specialists have an advanced knowledge and understanding in their specialty area. The same goes for insurance.

At MSMS Physicians Insurance Agency, you work with experts who truly understand your unique needs. **No one protects medical practices like we do.**

Not only do we give your practice great coverage and great value, but also as a subsidiary of the Michigan State Medical Society, we help protect the future of the medical profession. **Brilliant, huh?**

See how we can put our cerebrums to work for yours.

Visit mymmsinsurance.org today!



www.msmsinsurance.org
877-742-2758





MICHIGAN STATE MEDICAL SOCIETY
120 W. Saginaw, Lansing, MI 48823
msms@msms.org + www.msms.org
517-336-5762

State and County Medical Society Membership Application

CALHOUN COUNTY MEDICAL SOCIETY

PO Box 278
Battle Creek, MI 49016-0278
269-660-0893 • Calhouncms@yahoo.com

Do you work 20 hours or less per week? YES NO
Is your spouse a member of MSMS? YES NO
Is this the first year you have practiced in Michigan? YES NO

Please PRINT or TYPE

FULL NAME Last First Middle Initial MD or DO (Circle One)

HOME ADDRESS, CITY & ZIP Area Code & Telephone Number

OFFICE ADDRESS, CITY & ZIP Area Code & Telephone Number

PRACTICE NAME Office Fax Number

EMAIL ADDRESS For mailing, please use (check one): Office address Home address

BIOGRAPHICAL DATA Sex: Male Female Birth Place Date of Birth Month Day Year

Maiden Name Spouse's Name

Government Service (check one): Military National Health Service Beginning Date Completion Date

EDUCATION (please complete or attach CV)

Table with 4 columns: INSTITUTION, LOCATION, DEGREE, YEAR GRADUATED (Beginning, Ending). Rows for College/University and Medical School.

Table with 3 columns: INTERNSHIP, RESIDENCY, AND FELLOWSHIPS, SPECIALTY, COMPLETION DATE.

License: MI # Date Issued ECFMG #

License held in other states/countries (list states or countries)

PROFESSIONAL DATA Present Type of Practice (check appropriately):

OFFICE BASED: Solo Hospital Based Teaching Research Government
Group Practice Name Other (specify)

Specialty Subspecialty

Board Certifications (list specialties & dates)

Present Hospital Appointments (list dates)

Teaching Appointments (list dates)

Previous Medical Society Membership (list dates)

Specialty Society Memberships

Within the last five years, have you been convicted of a felony crime? YES NO IF YES, please provide full information.

Within the last five years, has your license to practice medicine in any jurisdiction been limited, suspended or revoked? YES NO IF YES, please provide full information.

Within the last five years, have you been the subject of any disciplinary action by any medical society or hospital staff? YES NO IF YES, please provide full information.

I agree to support the CALHOUN COUNTY MEDICAL SOCIETY Constitution and Bylaws, the MICHIGAN STATE MEDICAL SOCIETY Constitution and Bylaws, and the Principles of Ethics of the American Medical Association as applied by the AMA and the MSMS Judicial Commission.

Signature Date

WHEN COMPLETED, please mail to MSMS or Calhoun County Medical Society, or FAX to 517-336-5797. THANK YOU!



CALHOUN
 COUNTY
MEDICAL
SOCIETY

Since 1839

PO Box 278
Battle Creek, MI 49016-2078

Phone Messages / Fax:
269-660-0893

Email: calhouncms@yahoo.com
Diane Cummins, Executive Director

Articles submitted and opinions
expressed in *The Bulletin* are **views of
the writer and not necessarily those of
Calhoun County Medical Society**. Articles
must have author's signature, address
and phone. They can be sent to Calhoun
County Medical Society at the address
above.

NEWSLETTER DEADLINE:
*The 20th day of each month
prior to published month.*

A Nonprofit Physician's Professional Organization

BIOGRAPHY: A Society is a group of professionals with a common trade that offers networking and referrals, professional development and educational opportunities. The medical society offers enhanced services at the county level, guided by the professional state level. Calhoun County formed one of the earliest medical societies in the state of Michigan in 1839; Michigan State Medical Society formed in 1866.

MISSION STATEMENT: The purpose of the Calhoun County Medical Society / Michigan State Medical Society is to offer opportunities for networking, leadership and mentoring, grassroots medical legislative involvement, continuing medical educational needs along with personal and professional support services at the county, state, or national levels.

**VISIT OUR
WEBSITE...
www.calhouncms.org**

**SEND US YOUR
NEW EMAIL
ADDRESS
for faster
notifications**

OTHER RELATED WEBSITES:

<http://www.msms.org>
<http://www.mdpac.org>
<http://www.michmgma.org>
<http://www.bronsonbattlecreek.com>
<http://www.oaklawnhospital.org>
<http://www.sw-rehab.org>
<http://www.hclfonline.com>
<http://www.calhouncancer.org>