



**Tuesday,  
September  
10, 2013**



**Speaker:**  
**Eliuk, Brett J.,**  
**DO, FACC,**  
**FACOI,**  
**Medical Director**  
**for Cardiology at**  
**Bronson**  
**Battle Creek**

***R.S.V.P.***  
***Diane***  
**269.660.0893**

**Hospitalist  
Physician  
Guests  
WELCOME:**  
***Current  
Members...  
Be Sure to  
Invite One!***

## Cardiac Stress Testing: What, When and Where

**LOCATION**  
**BATTLE CREEK  
COUNTRY CLUB**

**AGENDA**

- \* **5:30-6:25 P.M.:**  
**CCMS Executive Committee (South Room)**
- \* **6:00-6:30 P.M.:**  
**Social/Networking (Lakeside Room)**
- \* **6:30-6:45 P.M.:**  
**MSMS Update by Dr. Ken Elmassian (Lakeside room)**
- \* **6:45-7:45 P.M.:**  
**Dinner/Presentation (1 CME) (Lakeside room)**

**MENU**  
**Buffet with vegetarian option**

**1-CME OBJECTIVES**

- ◆ **Review benefits of stress testing in evaluating and treating heart disease**
- ◆ **Discuss different types of stress tests available**
- ◆ **Discuss when to order the appropriate stress test**

**ABOUT THE SPEAKER**

MSMS President, **Dr. Ken Elmassian**, a Lansing Anesthesiologist, will kick off the evening with

a state update.

**Dr. Brett Eliuk** is Medical Director of Cardiology at Bronson Battle Creek. He is part of the group Advanced Cardiac Healthcare in Kalamazoo. He serves an appointment as Co-Director, Heart Failure Steering Committee at Bronson Hospital, Kalamazoo.

**Dr. Eliuk** received his MD from Michigan State University College of Osteopathic Medicine, East Lansing, Michigan, receiving his undergraduate Bachelor of Science in Zoology from Andrews University, Berrien Springs. He served his residency and fellowship at Michigan State University Garden City Hospital, Garden City, Michigan. He has board certifications and is a diplomate in nuclear cardiology, internal medicine, and as a medical examiner.

Previous appointments include Risk Management Committee. Professional Associations he belongs to

include American Society of Nuclear Medicine American College of Cardiology, American College of Osteopathic Internists, American College of Cardiology, Michigan Chapter, and American and Michigan Osteopathic Associations.

Academic achievements include Inductee, Beta Beta Beta National Biological Honor Society, Sigma Phi National Osteopathic Honorary Fraternity, and Chief Resident, Internal Medicine.

**TARGET AUDIENCE**

The target audience for this program is ALL PHYSICIAN MEMBERS of Calhoun County Medical Society. One (1) hour CME will be offered at this meeting.

Bronson Battle Creek is accredited by the Michigan State Medical Society committee on CME Accreditation to provide continuing medical education for physicians. Bronson Battle Creek designates this educational activity for a maximum of one category 1 toward the AMA Physician's Recognition Award. Each physician should claim only those credits that he/she actually spent in the activity.

This is a non-sponsored

Volume 174, Issue 4

**SEPTEMBER  
2013**

**CCMS  
EVENT  
CALENDAR**

**2013**

**2<sup>nd</sup> Tuesday,  
6:30pm Meeting  
Topics:**

Sep. 10 @ 6:30 P.M.	Cardiac Stress Testing, Dr. Eliuk (1 CME) @ BCCC
Oct. 8 @ 6:30 P.M.	Sherwood Winslow, MD Lectureship on Obesity @ BCCC
Nov. 12 @ 7:00 P.M.	7:00-8:00 Dr. Ginger Williams, CEO @ Oaklawn

**2014**

Sat., Jan. 18 @ 6:00 P.M.	President's Celebration @ BCCC
Feb. 11	TBA
Mar. 11	TBA

meeting. The speaker has no financial affiliations. A speaker disclosure form is on file in the Medical Staff Office at Bronson Battle

## PRESIDENT'S REPORT



**William J. Comai,  
DO**

2013 President,  
Calhoun County  
Medical Society.  
Email: comai-  
farms@aol.com

If you have  
COUNTY  
suggestions,  
call me at my  
Battle Creek  
office phone  
(269) 704-3133

"A  
government  
BIG enough  
to give you  
everything  
you want is  
STRONG  
enough to  
take  
everything  
you have."

~Thomas  
Jefferson

### Human Body "Facts"

The following are all supposedly facts derived from the internet in regards to the human body. Feel free to contest any of them that you find aren't true.

- ◆ It only takes 7 pounds of pressure to remove a human ear.
- ◆ The human brain stops growing at age 18.
- ◆ Pain travels through the body at 350 feet per second.
- ◆ In a kiss as many as 278 bacteria colonies are exchanged.
- ◆ The storage capacity of the human brain exceeds 4 terabytes.
- ◆ The right lung takes in more air than the left lung.
- ◆ The human lungs are 100 times easier to blow up than a standard type balloon but they tend to make lousy party favors.
- ◆ If you squeeze out all the bacteria from your intestines, you could almost fill up a coffee mug.
- ◆ The thumb is the same length as your nose.
- ◆ Dogs and humans are the only animals with prostates.
- ◆ Captain Cook lost 41 of his 98 crew members to scurvy on his first voyage to the South Pacific in 1768.
- ◆ Ernest Hemingway survived through Anthrax, malaria, pneumonia, dysentery, skin cancer, hepatitis, anemia, diabetes, high blood pressure, two plane crashes, a ruptured kidney, a ruptured spleen, ruptured liver, crushed liver, fractured skull and more.
- ◆ Your heart will pump about 212 million liters in its lifetime.
- ◆ The average person's skin weighs more than their brain.
- ◆ The average taste bud lives only 10 days before it dies and is replaced by a new one.
- ◆ The sneeze can travel at 100 miles per hour.

These are just things that I thought you might like to know.

*Sincerely,*  
*William J. Comai,*  
*DO*

### FEDERAL LEGISLATOR CONTACT INFO.:

U.S. Senator

**Debbie Stabenow-D**

Phone  
1-517-203-1760

Email: [senator@stabenow.senate.gov](mailto:senator@stabenow.senate.gov)

U.S. Representative 3<sup>rd</sup>

District **Justin Amash-R**

Phone  
269-205-3823

Website: [www.amash.house.gov](http://www.amash.house.gov)

### STATE LEGISLATOR CONTACT INFO.:

Michigan 62<sup>nd</sup> District State

Representative **Kate Segal-D**

Phone toll free  
1-888-347-8062

Email: [KateSegal@house.mi.gov](mailto:KateSegal@house.mi.gov)

Michigan 63<sup>rd</sup> District State

Representative **Jase Bolger-R**

Phone toll free  
1-877-265-4371

Email: [JamesBolger@house.mi.gov](mailto:JamesBolger@house.mi.gov)

**Michigan 19<sup>th</sup> District  
Senator Mike Nofs-R**

Phone 888-962-6275

Email:  
[senmnofs@senate.michigan.gov](mailto:senmnofs@senate.michigan.gov)

### Make Your Voice Heard

**Join MDPAC** (Medical Doctor Political Action Committee) **Today!**

- ◆ Participate
- ◆ Contribute
- ◆ Engage
- ◆ Unite
- ◆ Lead

<http://www.mdpac.org>

If you have questions, please contact **Andrew R. Schepers** at (517) 336-7579, or [aschepers@msms.org](mailto:aschepers@msms.org).

**Medicaid Expansion Improving Care, Saving Money**

The final **Senate vote to expand Michigan Medicaid** took place late Tuesday night, Aug.27th. The vote passed 20 to 18; however they did not pass "immediate effect." It takes a 2/3rds vote of 26 to pass immediate effect, otherwise, it will take 90 days to take effect. The two missing votes may be negotiated and re-voted when they reconvene in two weeks.

The **"Healthy Michigan Plan"** aims to expand and reform Medicaid eligibility to those with incomes up to 133% of the federal poverty level. Michigan State Medical Society supports Medicaid expansion.

**MSMS urges members to keep pressure on Senator Nofs to vote "Immediate Effect" on Medicaid expansion.**

Republican **Gov. Rick Snyder** has promoted the "Healthy Michigan" Medicaid plan, and a coalition of business and health care groups have gone to extraordinary measures urging Senators to support the legislation. It's been two months since the Republican-led House approved legislation to reform and expand Medicaid eligibility, and it's been two weeks since the Government Operations Committee advanced a substitute version of that bill, along with two

alternatives championed by more conservative Senators.

Various tea party and hyper-conservative groups have aggressively fought against expanding Medicaid under the auspices of "Obamacare." They've organized town halls, paid for radio ads, and hinted at potential primary challenges for supportive GOP lawmakers.

The plan for Medicaid expansion in Michigan was at a standstill after the Senate delayed an earlier vote that could have potentially provided health care for an estimated 400,000 uninsured Michigan adults. Governor Snyder continued to urge state senators to come back to the capitol during their recess to vote for Medicaid expansion. The bill passed the Senate Government Operations Committee earlier this month on a 4-0 vote with all Committee members voting yes, except for one abstention. The Committee also passed alternative proposals, as well.

On August 11th, two Republican lawmakers and a medical panel proposed an alternative. "A care model called 'Direct Primary Care Services'-- essentially it's a cash-only business. You don't have to deal with the overhead associated with the government peering over your shoulders micro-managing what should be a doctor-patient relationship," as stated by

**Sen. Patrick Colbeck.**

He goes on to say current Medicaid patients will remain covered under Medicaid. But many uninsured adults who would be covered under the Medicaid expansion won't be under Colbeck's alternative.

Democratic **Rep. Andy Schor** says where Medicaid expansion extends coverage to those who need it, Colbeck's alternative falls short. "Someone who's making \$15,000 a year can't afford a \$6,000 deductible!"

Governor Snyder was in Battle Creek on Wednesday, June 26th for an informational meeting on this at the Family Health Center. **Dr. John Schwarz** was a panelist, **Dr. Jim Mauer**, and **Diane Cummins** attended and took the following notes.

The "Healthy Michigan" bill is written to sunset within three years with a two-year provision to collect data whereas the plan must show savings. Those insured would be held accountable and wouldn't contribute if they're taking care of themselves. "Healthy Michigan" is a great long and short-term answer.

The Michigan Primary Care Association provided the following Talking Points including a sampling of points presented in the fiscal, economic, business, policy, and healthcare system

*Continued on page 5*

**LEGISLATIVE REPORT**



**• Marjaneh Rouhani, MD**  
CCMS Legislative Co-Chair  
Email: [mrouhani@doctor.com](mailto:mrouhani@doctor.com)  
Concerns?  
**Office ph**



**John J.H. Schwarz, MD**  
CCMS Legislative Co-Chair  
Email: [jschwarz@FHCB.com](mailto:jschwarz@FHCB.com)  
Concerns?  
Office phone (269) 965-8866

Medical legislation is continuous and requires constant attention.

## MSMS THIRD DISTRICT REPORT



**Michigan State  
Medical Society**  
120 W Saginaw  
East Lansing, MI  
48823

**Main Phone:**  
(517) 337-1351

Website:  
[www.msms.org](http://www.msms.org)

**Email:**  
[msms@msms.org](mailto:msms@msms.org)

### Calhoun's MSMS

#### Member

#### Consultant,

**Gary A. Huyge,**

*will be pleased to  
meet with you to  
answer your MSMS  
membership  
questions.*

*To schedule  
a visit, please  
contact him at*

*Phone  
616-826-4652*

*or*

*Email*

[GHuyge@msms.org](mailto:GHuyge@msms.org)

*—or— see him at  
our meetings.*

### **\*\*SCAM ALERT\*\***

An old scam is recirculating. Businesses are receiving e-mail notifications that their "2013 Annual Corporate Records Form" is due along with payment of \$125 payable to "Corporate Records Services." This is not a Michigan government form or filing requirement and should be disregarded.

A similar scam was being used last February by the same organization stating that Michigan corporations were required to file annual meeting minutes with the Department of Licensing and Regulatory Affairs, and that for \$125 they would fulfill the filing requirements.

**Please don't confuse this scam report with the Michigan Annual Report,** which typically carries a \$25 filing fee, is due on May 15 for corporations and February 15 for LLCs, and can be filed most easily on line with the Michigan Department of Licensing and Regulatory Affairs.

Contact MSMS Legal Team, Yeo & Yeo tax professionals for more information or further assistance.

Sincerely,  
Yeo & Yeo, P.C.  
MSMS Member CPAs and  
Business Consultants

### **17th Annual Conference on Bioethics**

*Pulling the Me in Medicine: The Ethics of Personalized Medical Care\**

**Campus Inn, Ann Arbor**

**Friday,  
September 27th**

**5:00-5:45 p.m.**

◆ Registration and Reception

**5:45-6:15 p.m.**

◆ Welcome and Opening Remarks

**6:15-7:15 p.m.**

◆ Pharmacogenomics and Personalized Medicine: Wicket Problems, Ragged Edges and Ethical Precipices

**7:15-8:15 p.m.**

◆ Dinner

**Saturday,  
September 28th**

**7:15 a.m.**

◆ Continental Breakfast

**8:00-8:15 a.m.**

◆ Welcome

**8:15-10:15 a.m.**

◆ Getting "Personal" About Personalized Medicine

**10:30-12:00 p.m.**

◆ Integrating Whole-Genome Sequencing into Clinical Practice: Ethical and Practical Issues

**1:00-3:00 p.m.**

◆ Case Studies: A Discus-

sion on Ethical Issues

**3:15-4:30 p.m.**

◆ The Ethics of Discontinuation of Cardio Electronic Implantable Devices & Closing

Remarks

\*Fees

**CME Offered at...**

**48th MSMS Annual Scientific Meeting,**

**Tuesday Saturday,  
October 22-26, at the  
Somerset Inn in Troy**

Hundreds of clinical courses and other educational programs. Up to **32.25 AMA PRA Category 1 Credit(s)**<sup>™</sup>.

Featuring clinical education on more than 40 topics, including cardiology, pain management, diabetes, HIT, infectious disease, dermatology, neurology, rheumatology, endocrinology/diabetes, colon and rectal surgery, asthma updates, urology, women's health, orthopedics, practice transformation, obesity, and more.

\*\*\*

**Registration for both programs:** Telephone: 517-336-5785

[www.msms.org/eo](http://www.msms.org/eo)

For more information, contact **Caryl Markzon** at 517-336-7575 or

[cmarkzon@msms.org](mailto:cmarkzon@msms.org).

\*\*\*



## CCMS REPORT

### MEMBERSHIP UPDATE

As of 7/31/13, we have a total of 219 members.

**Join us in Congratulating the NEW RETIREES:**

**Young H. Lee, MD,**  
Pediatrics, Northside  
Pediatrics

**John Morgan, MD,**  
Orthopaedic Surgery,  
Southern Michigan  
Orthopaedics - North

**Waldo Frankenstein, DO,**  
Family Medicine,  
Oaklawn-Bellevue  
Medical Services

**Congratulations, Doctors!**

**Keep in mind this is a membership-based organization. CCMS encourages all current members to continue to recruit new members.**

### Is CCMS in your...

#### ...OFFICE ADDRESS LISTS?

For your important practice announcements and changes include us at P.O. Box 278, Battle Creek, MI 49016-0278.

#### ...EMAIL CONTACT LISTS? at [calhouncms@yahoo.com](mailto:calhouncms@yahoo.com).

#### ...WEBSITE FAVORITES? at [www.calhouncms.org](http://www.calhouncms.org) and MSMS at [www.msms.org](http://www.msms.org).

### EMAILED MEETING FLYERS & NEWSLETTERS ARE RECEIVED FASTER!!!

Call the office or send an email request to Diane at [calhouncms@yahoo.com](mailto:calhouncms@yahoo.com).

## MEMBERSHIP DUES INFORMATION

The CCMS executive committee voted by email in June 2013 to NOT raise the 2014 dues. **MSMS mails 2014 dues in-voices in September.** We sincerely hope this line-item is an important part of your 2014 budget. **Please note:** County dues are 100% tax deductible; State dues are 85% tax deductible.

**Multiple payment options** include the easy GROUP BILL to the practice and/or monthly payments. **Also note: The AMA is NOT part of CCMS/MSMS.** As a convenience ONLY, AMA dues are OPTIONAL as a convenience to be paid on one invoice.

**Regular Full-time Active: CCMS \$275 / MSMS \$495**  
*We're Counting on You!*

## MSMS COMMITTEES

MSMS is always seeking County volunteers to serve on state committees. As a member, this is a GREAT way to become familiar with the state society at a minimum of time. **Please Consider...**

### Committees on:

- ◆ Aging
- ◆ Bioethics
- ◆ Annual Scientific Meeting
- ◆ CME Accreditation
- ◆ CME Programming
- ◆ Health Care Quality, Efficiency and Economics
- ◆ Information Technology
- ◆ Maternal and Perinatal Health
- ◆ Medical Licensure and Discipline
- ◆ Membership Recruitment and Retention
- ◆ State Legislation and Regulations

### Liaison Committees with:

- ◆ Michigan's Public Health
- ◆ Third Party Payers

### Task Forces on:

- ◆ A Patient Focused Compensation System
- ◆ Physician Extenders

## MSMS THIRD DISTRICT REPORT

*Continued from page 3*

categories:

- \$2 Billion a year added to state budget
- \$200 Million savings to Michigan budget; \$1 billion over the next decade.
- No State funding at all for 3 years
- No new GF required for 21 years
- \$100 Million in increased tax revenue
- \$53.6 Billion poured into Michigan's economy over the next 15 years
- Promise of reduction in overall healthcare costs

as part of GDP as more people receive preventive care and earlier treatment

- 13,000 To 18,000 jobs created
- Provides health insurance to employees in low-paying jobs
- Avoids \$54 to \$81 million in tax penalties to Michigan businesses
- Will reduce cost of private health care premiums due to elimination of cost shifting
- Healthier people miss fewer days of work
- Improved employability

- Provides health insurance coverage to 450,000 people in Michigan
- Polls say 63% of Michigan residents think we should take it
- Addresses major mental health coverage needs
- Provides relief to corrections budget including prevention services

*Best regards,*

*Marjaneh Rouhani, MD,*

*Joe Schwarz, MD*

## 2013 CCMS EXECUTIVE COMMITTEE

at the  
5:30  
meetings...

President - William J.  
Comai, DO

President-elect- Gunjana  
Bhandari, MD

Vice President - Satya B.  
Chaparala, MD

Secretary / Treasurer -  
Sridhar Chalasani, MD

Immediate Past  
President - Lokesh

Edara, MD

3rd District Director - Joe  
Schwarz, MD

Legislative Chair-  
Marjaneh Rouhani,  
MD

Michigan Society of  
Hematology &

Oncology - Stephen L.  
Smiley, MD

### Trustees (3-Year Terms)

Zarius Drummond, MD,  
exp. 2013

Karl Loomis, MD,  
exp. 2013

Christopher M. Flynn, MD,  
exp. 2014

Patrick Sweeney,  
exp. 2014

Maddur Badarinath, MD,  
exp. 2015

Kari Formsma, MD,  
exp. 2015

### MSMS Delegates (1-Year Term)

Raakesh C. Bhan, MD

B. Douglas Campbell, MD

James H. Timmons, MD,  
PhD

Paul A. Walk, MD

### Alternate Delegates (1-Year Term)

Daniel C. Hood, MD

Jeff M. Jones, MD

Mahesh C.

Karamchandani, MD

## Elkmoss Corner: "Mountain Driving"

Moosetown, where I grew up, is in the eastern part of Moss State. I say there are a lot of mountains there, but I usually get corrected and told they are only hills. Nonetheless, I learned to drive on those many hilly roads. While the accident rate was probably the same as other parts of the state, the mortality or serious accident figures were considerably lower, mostly because one could not drive very fast. Still to this day, I thoroughly enjoy driving on narrow mountain roads. Mrs. Elkmoss, who grew up on the relatively flat western part of the state and abhors twisting roads, always has to sit in the front seat of the car to avoid motion sickness. She is a natural back seat driver, so it is doubly troublesome to her to be driving with me on a mountain road. I do not know what is more exciting when driving with her on a narrow, winding road—the thrill of the ride or listening to Mrs. Elkmoss' panicked pleas to slow down. Either way it is quite an experience.

Nowadays with Interstates and better roads, I do not get a chance to demonstrate my skills very often, but when I do, I relish the moment. Several years ago during the summer after the eldest Elkmoss kid graduated

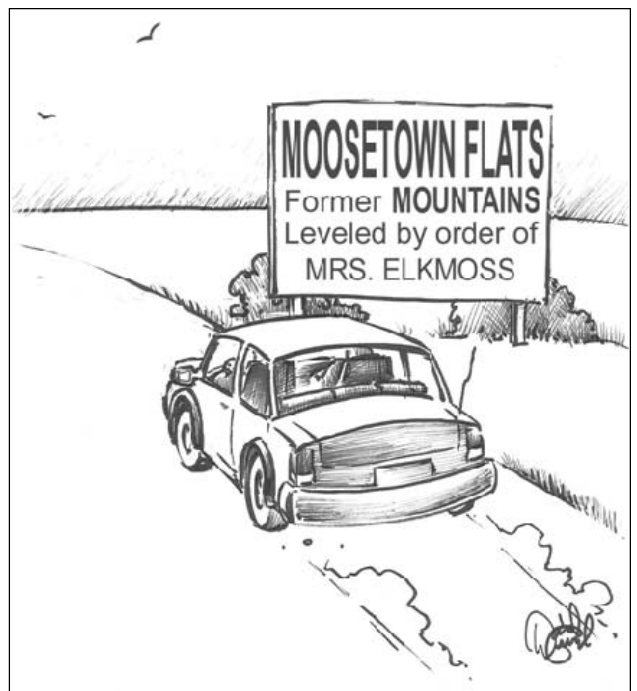
from high school, our family of five, along with Mrs. Elkmoss' parents, went to Hawaii. Mrs. Elkmoss and I had gone to a conference there early in our marriage and we vowed not to make the same mistake of staying only six days. I had just gotten over the jet lag going there by the time we returned, and it took me two more weeks to recover from the trip. This time we stayed six days in Oahu and became acclimatized before spending seven more days in Maui. I still had a significant recovery time when we got back home, but it was worth it.

The highlight of our stay in Maui was taking a 68-mile highway, over a narrow, twisting road with breathtaking sights—the "Road to Hāna". All seven of us fitted nicely in a rented minivan. I had great fun driving, but Mrs. Elkmoss was not happy. She still recalls the experience every time we go traveling on a mountain road and her whole life flashes before her. I

am not sure if it is her life she was worried about as much as the rest of her family.

It is not that the Road to Hāna is the only flashback Mrs. Elkmoss has. About six months after the third Elkmoss kid was born and to celebrate her birthday (as well as have room for our enlarged family), we bought a minivan. It was in October and none of the kids were in school yet, so we planned to take a big trip to Williamsburg. I wanted to spend considerable time in the historic area and Mrs. Elkmoss wanted to spend several days with the kids at Busch Gardens.

We ended up getting tired of the Historic Williamsburg after one day and Busch Gardens the



## Elkmoss *(continued)*

next day and were ready to go home. That left five more days before I had to go back to work, and I was not going to go home that soon. After considering our options, Mrs. Elkmoss suggested we travel down South and visit my Aunt Jane.

By that time, both my parents, grandparents, and other aunts (neither my father nor mother had any brothers) had all passed away. My only living relative other than Sister Elkmoss was Aunt Jane. She had married a veterinarian from Canada and had been living in the South for many years where Uncle Doc (as we called him) specialized in taking care of chickens for the state.

Aunt Jane was a delightful person, but she had one characteristic that drove Mrs. Elkmoss crazy. Every year or so, Aunt Jane and Uncle Doc would make a trip from the South to Canada to visit with Uncle Doc's extended family. Our house was a good stopping place on the final leg of their journey. We were happy with their visits except for one thing: they would never tell us in advance when they were coming. We would get a call about fifteen minutes before they arrived, usually when the obsessive compulsive Mrs. Elkmoss

was planting flowers or doing something extremely messy!

Aunt Jane's visits continued for years, but then, within driving distance to her house from Williamsburg, I called her and told her we would be dropping in the following afternoon. (At least I gave her almost 24 hour notice.) Aunt Jane did not hesitate in telling us we could not come. There was no explanation, we could not come! The only nice thing about the experience was that never again were we victims of surprise visits from Aunt Jane.

The following day, we packed up our brand new minivan and headed back to Moss State. We strapped the 2- and 4-year-old boys in their car seats in the very back and kept our 6-month-old in the middle seat so that Mrs. Elkmoss, in the front passenger seat of course, could reach our new daughter easily. The most direct route from Williamsburg to Moss State is through the mountains of West Virginia. I know they are not as big as ones in the Rockies, but they are mountains, not hills. That is why they are called Appalachian Mountains, not Hills, and they have twisting, winding roads through them.

We were coming down a fourth long, wind-

ing mountain road and I saw that everyone seemed to be doing well. I casually made the observation to Mrs. Elkmoss, "Gee, I seem to remember as a kid, my sister and I frequently got sick traveling down roads like this. Our kids seem to be doing quite well."

Just then, halfway down the lengthy, narrow two-lane road, both boys simultaneously started throwing up— all over the back seat of our new van. It was so violent that the mess even got up to our baby in the middle seat. They continued retching as I motored down the long hill as there was no place to pull over. At the bottom, Mrs. Elkmoss quickly reached the boys, but the damage had been done. All Mrs. Elkmoss had to clean with were baby wipes and diapers, and that was hardly adequate.

For years, in spite of very thorough cleaning by the obsessive compulsive Mrs. Elkmoss, we could still smell the results of our mountainous trip. I guess you could say that was much more memorable than taking the Road to Hāna.



*Herman J.  
Elkmoss,  
MD*

## Do You HAVE BOTH ELKMOSSES BOOKS?

June 2012,

### **Further**

*Adventures of  
Herman J.  
Elkmoss, MD,*  
was released.

The original book, *The  
Marvelous  
Adventures of  
Herman J.  
Elkmoss, MD,* can be purchased directly from PublishAmerica or through Amazon or Barnes & Noble online. (E-book versions will soon be available as well.)

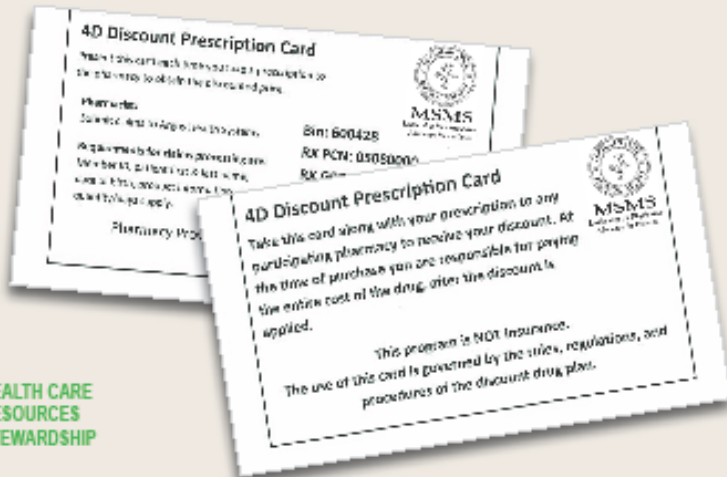
Enjoy the antics, comedy, and physician education and experiences. Great as short reading or as a gift. Contact **Jeff Jones, MD,** to acquire your copies locally!

# MSMS 4D PATIENT PHARMACY CARD

HELP YOUR PATIENTS  
**SAVE**  
 UP TO **65%**  
 ON THEIR  
 PRESCRIPTIONS



- FREE SAVINGS CARD
- **ORDER FREE QUANTITIES** FOR YOUR PATIENTS
- **PATIENTS ENJOY SAVINGS** AT NEARLY EVERY MICHIGAN PHARMACY



Helping You Help Your Patients

SEE REVERSE SIDE FOR FREQUENTLY ASKED QUESTIONS! >>>



NO POSTAGE  
 NECESSARY  
 IF MAILED  
 IN THE  
 UNITED STATES

**BUSINESS REPLY MAIL**  
 FIRST-CLASS MAIL PERMIT NO. 89 EAST LANSING, MI

POSTAGE WILL BE PAID BY ADDRESSEE

MICHIGAN STATE MEDICAL SOCIETY  
 ATTN: VIRGINIA GIBSON  
 120 W. SAGINAW STREET  
 EAST LANSING, MI 48823



Continued on page 9



## Honoring our CCMS Friend In Passing

The members of the Calhoun County Medical Society express our most sincere condolences.

**Dr. Christopher Cowan “Kit” Higgins**, 78, of Battle Creek, passed away July 7, 2013 at Bronson Battle Creek. He was born June 7, 1936, the son of Kenneth F. and Annabelle (MacRae) Higgins in Detroit.

Kit graduated from Ferndale-Lincoln High School, attended Albion College and received his medical degree from the University of Michigan. He served in the Michigan Air Guard as a Flight Surgeon from 1962 until 1968. He worked as a radiologist in Battle Creek from 1967 until retiring in 1997 and served a term as Chief of Staff at Community Hospital.

Kit is survived by his wife, Joan E. (Blaurock) Higgins of Battle Creek; sons, Stephen E. (Jane) Higgins, MD of Portage, Scott A. (Barbara) Higgins of Kalamazoo, Kenneth E., (Laura) Higgins of Wayzata, Minnesota, and John C. (Tegan) Higgins of Milford; ten grandchildren, and sister Carol McNeal of Okemos; brother-in-law Bill Shanks of Battle Creek. He was preceded in death by his parents and sister, Kathryn Shanks.

Kit was a member of the Calhoun County Medical Society and Michigan State Medical Society; the U of M Victors Club and the U of M Alumni Association;

the Battle Creek Country Club; and the Knife and Fork Club. He especially enjoyed hunting, fishing and boating, skiing and playing golf with family and friends.

The family received friends Thursday, July 11 at Shaw Funeral; services took place Friday, July 12, 2012 at the funeral home, Rev. Thomas J. Ott, officiating. Memorial contributions may go to the Battle Creek Community Foundation Scholarship Fund or the Food Bank of South Central Michigan.

[www.shawfuneralhome.com](http://www.shawfuneralhome.com)

Published in **Battle Creek Enquirer** on July 9, 2013.



**Christopher Cowan “Kit” Higgins, MD, Radiology—Retired**

## MSMS 4D PHARMACY CARD

*Continued from page 8*

### Frequently Asked Questions

**Q: Is there a cost to my practice to provide these cards to patients?**

A: No. MSMS is making these available to MSMS member physicians at no charge, so they can help their patients—so important in this difficult economic climate. All patients are eligible.

**Q: Is this card the same as regular insurance?**

A: No, this is not insurance. This card allows patients to get prescriptions at a discounted price.

**Q: Do patients pay a fee to use this card? When can patients start using the card?**

A: There's no fee. Patients can use the card immediately.

**Q: Which patients should I give this card to?**

A: Your patients who do not have prescription drug coverage or have limited prescription drug coverage would benefit the most from these cards.

**Q: Do patients have to show the card at the pharmacy each time they go?**

A: Yes, they will need to present this card each time they pick up a prescription.

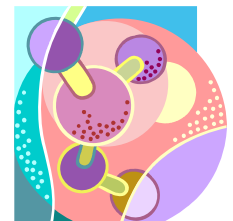
**Q: Can patients use the card at any pharmacy?**

A: Nearly every pharmacy in Michigan, and in the country, accepts this discount drug card, including all the major chains.

**Q: Is patient information kept private?**

A: Yes, 4D Pharmacy Management Systems, Inc. is HIPAA compliant.

**Call MSMS today to order.**





**Roshan  
Karam-  
chandani ,  
CCMSA  
President**

As a spouse or partner of a Medical Society member (physician), you are eligible to become a member of the Calhoun County, Michigan State, and National Medical Society Alliances.

The Alliance is the largest volunteer arm of the CCMSA/MSMSA/AMAA, supporting medical families through advocacy and education and serves as a volunteer voice of healthy families in our communities.

You can learn more about the rich opportunities available at [www.msmsa.org](http://www.msmsa.org) or [www.amaalliance.org](http://www.amaalliance.org).



## Calhoun County Medical Society Alliance News *(repeated from May)*

*Dear Friends,*

As you all know, it is time to renew your Calhoun County Medical Society Alliance (CCMSA) membership. The Alliance is the community service and support arm of the CCMS. Its goals are to promote health in the community and support the medical family. Spouses/partners of medical society members are eligible to join. There are also state and national level membership opportunities. Please note changes for sending dues on the membership form, as there have been some changes at the state level

in how things are administered.

We are looking for new county officers with new energy and ideas for the upcoming year, 2013-14. If no one is interested, **Jenny** and **Roshan** will continue for one more year, and then we will need to make a decision:

- ◆ to continue,
- ◆ join Kalamazoo County, or
- ◆ go dormant.

Roshan will continue to send out the Holiday Sharing Card in November. **Maura Collins** and **Kathy Sawchuk** have agreed to continue to administer the Scholarship Fund at the BCCF.

There will not be an annual luncheon this year due to lack of interest. Please contact Jenny if you would like a year-end financial report at . Contact Jenny or Roshan if you have any suggestions or comments, or would like to become more active.

We appreciate your help in this matter.

Sincerely,

*Roshan*

*Karamchandani*

President, 979-9740  
[roshanmk@comcast.net](mailto:roshanmk@comcast.net)

*Jenny Krauss*

Treasurer, 963-6131  
[j.krauss.9435@gmail.com](mailto:j.krauss.9435@gmail.com)

## More Educational Opportunities: Improving Health Care Performance—When Doctors Become Leaders



### Physician Executive Development Program

**On-site at the  
MSU Management  
Education Center, Troy  
Wednesday, October 9,  
and Wednesday,  
November 6, 2013**

**Webinar:  
October 30, 2013**

What's it take to be a top-notch business leader and remain an exceptional physician while the world of health care is constantly changing? Find out this fall when the Michigan State Medical

Society and Medical Advantage Group host a Physician Executive Development Program. As a physician, YOU play a key role in shaping the future of health care, and your attendance at the seminar will contribute to your success.

#### Featured Topics

- Approaches to Leadership Principles and Performance
- Economic Trends Affecting Health Care
- Strategic Planning for Success
- Financial Issues for

Emerging Delivery Models

- Health Care Law
  - Conflict Resolution – Successful Tactics to Resolve Disputes
  - Team Meeting Management/Presentation Skills
  - Maximizing Work Flow Management
- ...To name a few.

Fees: \$395 for series, \$200 single day

**For more information, contact Caryl Markzon at 517-336-7575 or [cmarkzon@msms.org](mailto:cmarkzon@msms.org).**



# Michigan State Medical Society Alliance

3031 W.Grand Blvd., Suite 645 Detroit, MI. 48202 (313) 874-1366

**MEMBERSHIP YEAR 2013 - 20014**

## MEMBER INFORMATION

Name \_\_\_\_\_

Address \_\_\_\_\_

Home Phone \_\_\_\_\_

Email \_\_\_\_\_

County \_\_\_\_\_ Member Type \_\_\_\_\_

MSMS Alliance member since (year) \_\_\_\_\_ County Alliance member since (year) \_\_\_\_\_

Spouse Name (full name) \_\_\_\_\_

## PAYMENT INFORMATION

Please make check payable to **MSMSA** and mail to  
**MSMSA 3031 W.Grand Blvd., Suite 645 Detroit, MI. 48202**

DUES	AMOUNT
AMAA	50.00
MSMSA*	32.00
County **	
Total Paid	

PAYMENT METHOD	
<input type="checkbox"/> Check	<input type="checkbox"/> Discover <input type="checkbox"/> Visa <input type="checkbox"/> MasterCard
Card Number: _____	
Expiration Date: _____	
Signature: _____	

\*If you are a spouse of a retired physician, you can pay the reduced amount of \$25.00 for **STATE** dues.

# THANK YOU FOR YOUR SUPPORT!

RETURN TOP PORTION WITH YOUR PAYMENT

Michigan State Medical Society Alliance  
 Membership Dues Statement

DUES	AMOUNT PAID	For Your Records	
AMAA		Check Number:	_____
MSMSA		Check Date:	_____
County		Check Amt:	_____
Total Amt Paid		Credit Card Used:	_____

RETAIN BOTTOM PORTION FOR YOUR RECORDS

### \*\* COUNTY DUES SCHEDULE

Calhoun	25.00
Delta	35.00
Genesee	20.00/5.00 (Resident/MSS)
Grand Traverse	18.00
Ingham	25.00
Jackson	25.00
Kalamazoo	20.00
Kent	20.00
Marquette-Alger	30.00
Midland	35.00
Monroe	20.00
Muskegon	25.00
N. Michigan	15.00
Saginaw	20.00
Washtenaw	10.00
Wayne	20.00/5.00 (Resident/MSS)
At Large Members	None

# CALHOUN COUNTY MEDICAL SOCIETY

Since 1839

PO Box 278  
Battle Creek, MI 49016-2078

Phone Messages / Fax:  
269-660-0893  
Email: calhouncms@yahoo.com  
Diane Cummins, Executive Director

Articles submitted and opinions expressed in *The Bulletin* are **views of the writer and not necessarily those of Calhoun County Medical Society**. Articles must have author's signature, address and phone. They can be sent to Calhoun County Medical Society at the address above.

**NEWSLETTER DEADLINE:**  
*The 20th day of each month prior to published month.*

## A Nonprofit Physician's Professional Organization

**BIOGRAPHY:** A Society is a group of professionals with a common trade that offers networking and referrals, professional development and educational opportunities. The medical society offers enhanced services at the county level, guided by the professional state level. Calhoun County formed one of the earliest medical societies in the state of Michigan in 1839; Michigan State Medical Society formed in 1866.

**MISSION STATEMENT:** The purpose of the Calhoun County Medical Society / Michigan State Medical Society is to offer opportunities for networking, leadership and mentoring, grassroots medical legislative involvement, continuing medical educational needs along with personal and professional support services at the county, state, or national levels.

**VISIT OUR WEBSITE...  
www.calhouncms.org**

**SEND US YOUR NEW EMAIL ADDRESS for faster notifications**

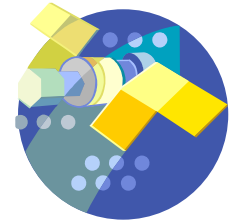
### OTHER RELATED WEBSITES:

- <http://www.msms.org>
- <http://www.mdpac.org>
- <http://www.michmgma.org>
- <http://www.bronsonbattlecreek.com>
- <http://www.oaklawnhospital.org>
- <http://www.sw-rehab.org>
- <http://www.hclfonline.com>
- <http://www.calhouncancer.org>

## SEPTEMBER - NATIONAL RECOVERY MONTH

### RISK MANAGEMENT TIP #32: OPIOID ANALGESICS—ASSESS ADDICTION RISK

By American Physicians Assurance Corporation



#### **\*Have a Written Agreement in Place**

When prescribing opioid analgesics for chronic pain, it's important to assess the patient's risk of addiction. You should ask the patient about their experience with alcohol, illegal drugs, abuse of prescription drugs, and whether there is a family history of addiction problems. **Patients should also sign an agreement that includes a request for medical records from previous healthcare providers and the following statements:**

1. Patient will:
  - ◆ Obtain mood-altering drugs only from you
  - ◆ Only fill opioid prescriptions at one pharmacy
  - ◆ Not change their medication dosage without discussing it with you
  - ◆ Abstain from alcohol and illegal drug use
  - ◆ Provide urine for drug screening if requested
2. No early refills will be given
3. All recommended consultations will be obtained

For more information, **call 800-748-0465** and ask to speak with a Risk Management Consultant.



#### **National Institute on Drug Abuse (NIDAMED)**

In preparation for this health observance, the National Institute on Drug Abuse is working to help promote NIDAMED's resources for clinicians and patients about drug addiction treatment, including prescription drug /opioid abuse treatment. More detailed information about the treatment resources can be found at <http://1.usa.gov/14ORB5w>.